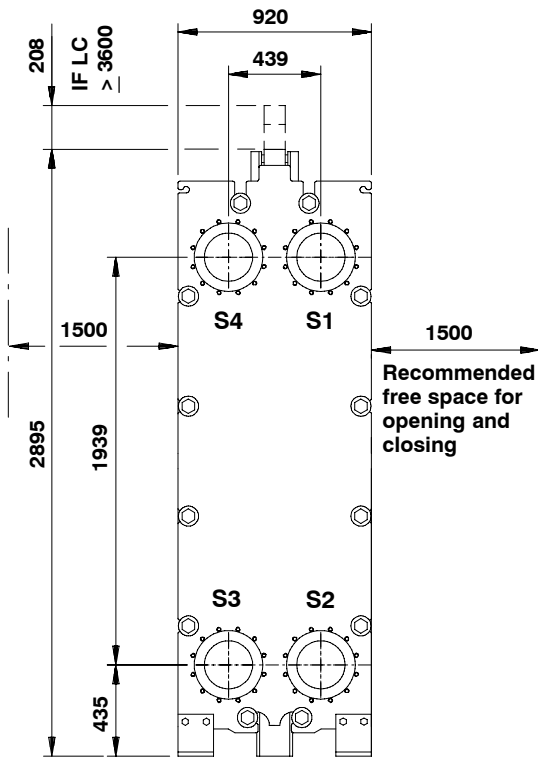


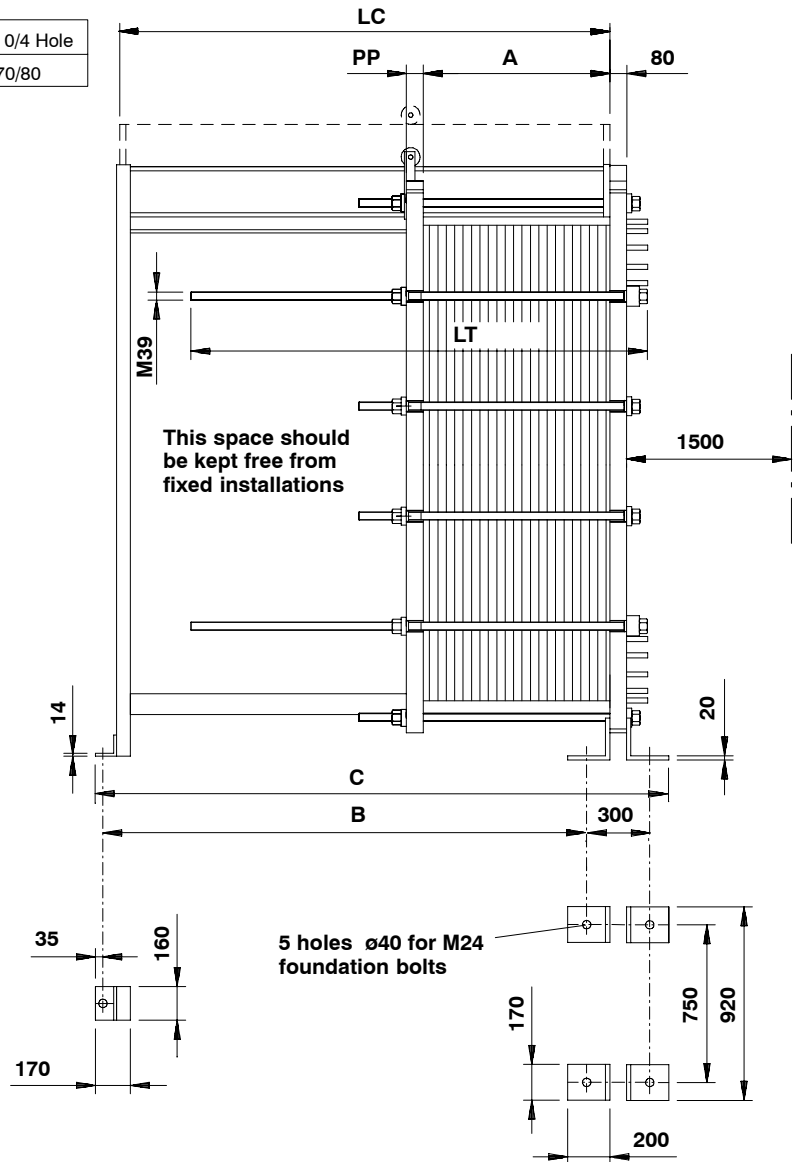


Plate heat exchanger type **MX25-BFG** ALS

All dimensions in mm

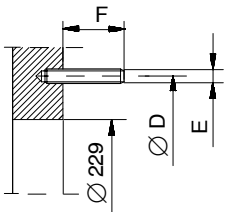


PP 0/4 Hole
70/80

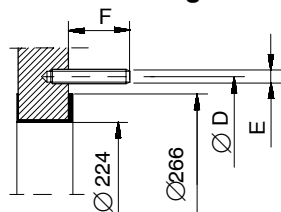


CONNECTION TYPES

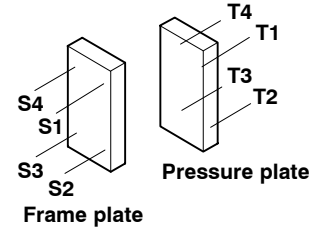
1. Unlined connection



2. Sheet lining



CONNECTION LOCATIONS



STANDARD	D	E	F	No. of stud bolts
DIN PN16 DN200	295	M20	104	12
ASME Cl.150	298,4	3/4"-10UNC	96	8
JIS 16K	305	M22	72	12

LOCATION	MEDIA	CONN.TYPE

Connection standard DIN PN16 also valid for EN1092 PN16 and GB PN16 and GOST PN16

QUOTATION NO.		
ORDER NO.		
ITEM NO.		
CALCULATION NO.		
PREPARED	CHECKED	APPROVED

Date	No.	Edition	Dept.
0506	32200-14041	1	PC CHE