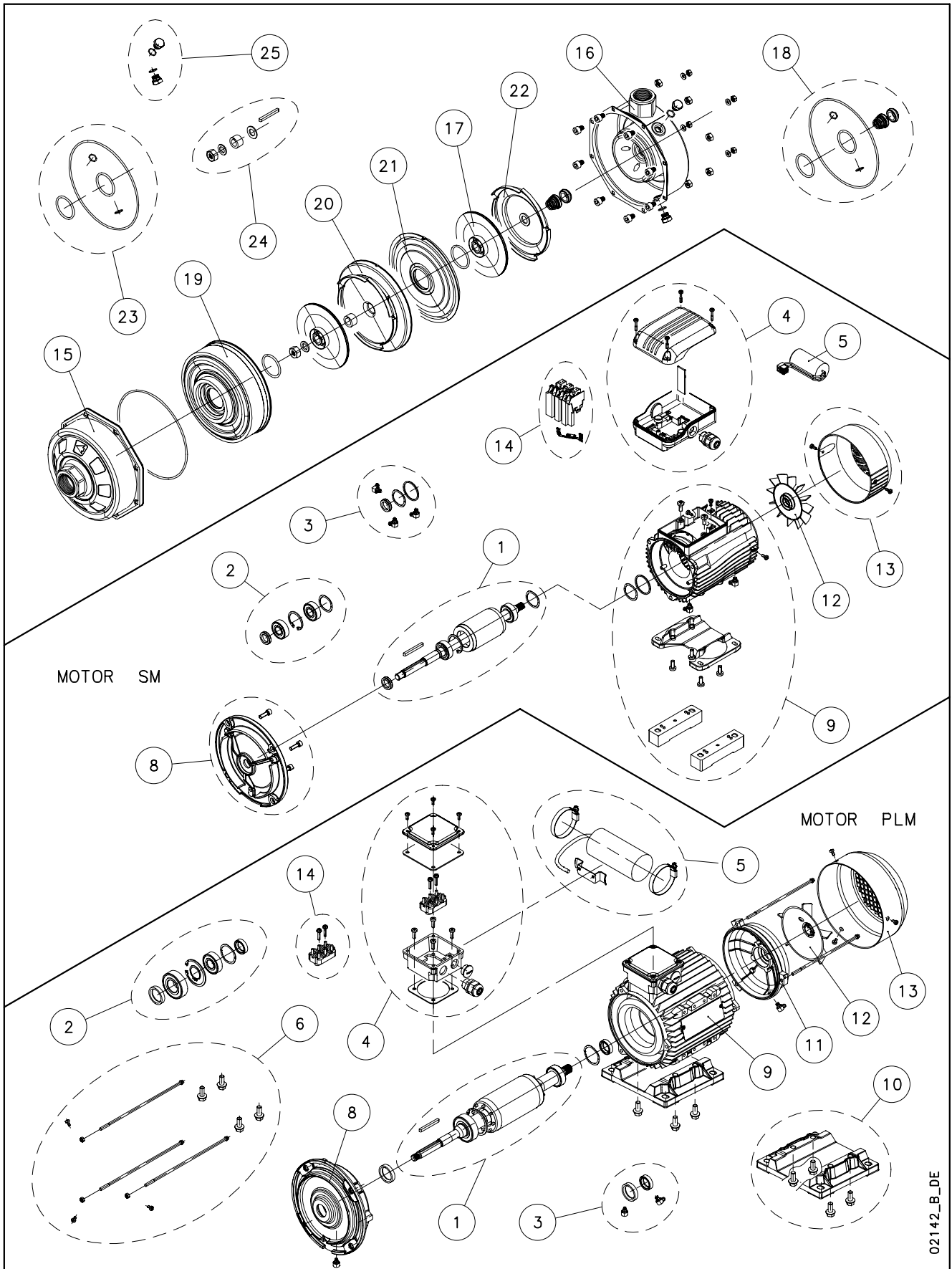


## CA(N) / 2CAX



02142\_B\_DE

Lowara, Flygt and Vogel Pumpen are a trademark of Xylem Inc. or one of its subsidiaries. Goulds is a registered trademark of Goulds Pumps, Inc. and is used under license.

N.	Descrizione it	Description en	Description fr	Beschreibung de	Descripción es	Descrição pt
1	Albero rotore completo	Shaft rotor complete	Arbre rotor au complet	Rotorwelle Komplete	Eje rotor complete	Eixo rotor completo
2	Cuscinetti - Anelli	Bearings - Rings	Roulements - Anneaux	Lagers - Ringe	Cojinetes - Anillos	Rolamentos - Anéis
3	Anelli tenuta - Tappi	Oil seals - Plugs	Bagues étanchéité-Bouchons	Abdichtungsringen-Schrauben	Anillos estanqueidad- Tapones	Selos anéis -Tampões
4	Scatola morsettiere	Terminal box	Boite a bornier	Klemmenkasten	Caja de bornes	Quadro de grampos
5	Condensatore	Capacitor	Condensateur	Kondensator	Condensador	Condensador
6	Tiranti PLM90	Tie rods PLM90	Tiges PLM90	Spannstangen PLM90	Tirantes PLM90	Tirantes PLM90
8	Lanterna	Adaptor	Lanterne	Passfeder	Adaptador	Adaptador
9	Cassa statore	Stator housing	Carcasse stator	Statorgehäuse	Carcasa estator	Caixa estator - Quadro de grampos
10	Piedi motore	Motor feet	Piedes moteur	Motorstützfuss	Motor pies	Motor pés
11	Scudo posteriore NDE	Rear shield NDE	Flasque arriere	Hinteren Schild	Escudo posterior	Escudo posterior
12	Ventola	Fan	Ventilateur	Lüfterrad	Ventilador	Ventoinha
13	Copriventola	Fan cover	Couvercle de ventilateur	Lüfterradhaube	Tapa ventilador	Cobertura da ventoinha
14	Basetta con perni	Base with pins	Bornier avec fiches	Klemmenbrett mit zapfen	Soporte de pernos	Bloco de grampos
14	Morsettiere ( Plug-in )	Terminal block ( Plug in )	Bornier enfichable ( Plug in )	Steck-Klemmkasten ( Plug in )	Place de bornes ( Plug in )	Grampo ( Plug in )
15	Flangia di aspirazione	Suction flange	Bride d'aspiration	Ansaugflansch	Brida de aspiración	Flange de aspiração
16	Corpo pompa	Pump body	Corps de pompe	Pumpengehäuse	Caja bomba	Corpo da bomba
17	Girante	Impeller	Roue	Laufrad	Rodete	Impulsor
18	Kit tenuta mecc. + OR	Mechanical seal + OR kit	Kit garniture mec. + joints toriques	Gleitringdichtung + OR	Kit sello mec. + junta tórica	Kit vedante mec. + OR
19	Coperchio diffusore	Diffuser cover	Couvercle diffuser	Diffusordeckel	Cubierta difusor	Tampa difusor
20	Diffusore	Diffuser	Diffuseur	Diffusor	Difusor	Difusor
21	Coperchio diffusore finale	Final diffuser cover	Couvercle diffuser final	Enddiffusordeckel	Cubierta difusor final	Tampa difusor final
22	Diffusore finale	Last stage diffuser	Diffuseur dernier étage	End Diffusor	Difusor final	Difusor final
23	Kit guarnizioni OR	O ring kit	Kit joints toriques	O-Ring-Dichtungssatz	Kit juntas tóricas	Kit guarnições OR
24	Kit bloccaggio giranti	Impeller locking kit	Kit blocage roues	Laufrollerblockierungssatz	Kit bloqueo rodetes	Kit bloqueio impulsores
25	Tappi + OR	Plugs + ORings	Bouchons + joints torique	Schrauben + OR	Tapones + junta tórica	Tampões + OR
N.	Beschrijving nl	Περιγραφή el	Açıklama tr	Kuvauus fi	Описание ru	Opis pl
1	Rotor as compleet	Άξονας στροφέα πλήρης	Döner mili tam	Aksel roottori komplet	ротор дреvко законченный	Walek kompletny (z rotorem)
2	Lagers - Ringen	Κουζινέτα - δαχτυλίδια	Rulmanlar - Ringes	Laakeri - Rengas	Подшипники	Łożyska - pierścienie
3	Zegel ringen - Stekkers	Στεγανοποιητικοί δακτύλιοι - Πώματα	Fok ringes - Tikas	Sinetin renkaasta - pistokkeiden	нефть толень - кольцо	Uszczelka olejowa - zatyczki
4	Kabelkast	Κιβώτιο συστοιχίας ακροδεκτών	Terminal Kutu	Terminaal in laatikko	Крышка клемника	Skrzynka zaciskowa
5	Condensator	Πυκνωτής	Kondansatör	Kondensaattori	конденсатор	Kondensator
6	Trekstangen PLM90	Ράβδοι δεσμών PLM90	Çekme cubukları PLM90	Vetotankot PLM90	Тяги PLM90	Szpilki gwintowane PLM90
8	Lantaarnstuk	Ομφαλός	Adaptör	Sovitin	Крестовина	Piasta
9	Statorhuis	Κάσα στάτη	Duraç karteri	Staatotori kotelo	Корпус статора	Stator
10	Motor voeten	Πόδια κινητήρα	Makina ayak	Moottori jalat	двигатель стопы	Stopki silnika
11	Achtergedeelte Motorhuis	Πίσω προφυλακτήρας NDE	Arka koruma	Taka-kilpi	задний щит	Tyłna tarcza
12	Ventilator	Ανεμιστήρας	Vantilatör	Tuuletin	Импеллер	Wentylator
13	Ventilatorkap	Κάλυμμα ανεμιστήρων	Vantilatör kapağı	Tuuletin suojus	Крышка импеллера	Osona wentylatora
14	Klemmenbord	Βάση με πείρους	Kaide bacaklar	Pohja nuppineula	основа булавка	Podstawa ze sworzeniami
14	Klemmenbord (Plug in)	Συστοιχία ακροδεκτών (Plug in)	Kaide bacaklar Plug in	Pohja nuppineula Plug in	основа булавка Plug in	Podstawa ze sworzeniami Plug in
15	Aanzuigflens	Φλάντζα αναρρόφησης	Emme flansı	Imulaipra	Фланец всасывания	Flanec ssawny
16	Pomphuis	Σώμα αντλίας	Pompa gövdesi	Pumpun runko	Корпус насоса	Korpus pompy
17	Waaier	Πτερόγιο	Pompa rotoru	Juoksupyörä	Рабочее колесо	Wirnik
18	Set mech. asafdichting + O-ring	Κιτ μηχανικής στεγαν + OR	Mekanik salmastra kiti + O-Ring	Mek. tiiviste + O-rengassarja	Комплект мех.прокладки + OR	Zestaw uszcz. mech. + OR
19	Diffusordeksel	Καπάκι διαχυτήρα	Difüzör kapağı	Diffusorin kansi	Крышка диффузора	Okladka dyfuzor
20	Diffusor	Διαχυτήρας	Difüzör	Diffusori	Диффузор	Dyfuzor
21	Diffusordeksel laatste trap	Καπάκι τελικού διαχυτήρα	Son difüzör kapağı	Loppuvaiheen diffusorin kansi	Крышка концевого диффузора	Okladka dyfuzor końcowy
22	Diffusor laatste trap	Τελικός διαχυτήρας	Son difüzör	Loppuvaiheen diffusori	Концевой диффузор	Dyfuzor końcowy
23	Set O-ringafdichtingen	Κιτ τσιμουχών OR	O-Ring kiti	O-rengassarja	Комплект кольцевых прокладок OR	Zestaw uszczelk OR
24	Set waaierblokkeringen	Κιτ ασφάλισης πτερυγίων	Pompa rotorlarını sabitleme kiti	Juoksupyörien kiinnitysarja	Комплект блокировки раб. колес	Zestaw blokujący wirniki
25	Pluggen + O-ring	Πώματα + OR	Tapalar + O-Ring	Tulpat+ O-rengassarja	Пробки + OR	Zatyczki + OR

**CAM/B - CAM/P  
CA/D - CA/P**

ELP 1 -, 220 - 240

CAM -->	<b>70/33/B</b>	<b>70/34/B</b>	<b>70/45/B</b>		<b>120/33/B</b>	<b>120/35/B</b>	<b>120/55/P</b>	<b>200/33/P</b>	<b>200/35/P</b>	
ELP 3 -, 230/400	101810000	101810010	101810020		101810030	101810040	101810050	101810060	101810070	
CA -->	<b>70/33/D</b>	<b>70/34/D</b>	<b>70/45/D</b>	<b>70/55/D</b>	<b>120/33/D</b>	<b>120/35/D</b>	<b>120/55/P</b>	<b>200/33/P</b>	<b>200/35/P</b>	<b>200/55/P</b>
	104490000	104490010	104490030	104490040	104490050	104490060	101810170	101810180	101810150	101810160
kW -->	<b>0,75</b>	<b>0,9</b>	<b>1,1</b>	<b>1,5</b>	<b>1,1</b>	<b>1,5</b>	<b>2,2</b>	<b>1,85</b>	<b>2,2</b>	<b>3,0</b>
CA4 -->							<b>120/55/B</b>			
							101810360			
kW -->							<b>0,37</b>			

**Pump kit**

18*	Material-->	<b>VBPGG</b>	<b>VBEGG</b>	<b>VBVGG</b>	<b>Q1Q1EGG</b>	<b>Q1Q1VGG</b>	D.16
	Mech Seal kits	KL01ABG	KL01ABH	KL01ABK	KL01ADP	KL01ADQ	
23*	OR NBR Kit	KL02ABK					
	OR EPDM Kit	KL02ABL					
	OR FPM Kit	KL02ABM					
24	Imp.lock kit D:12	KL39AAE	316SS				
25	Fill-Drain plug NBR	KL34AAN					
	Fill-Drain plug EPDM	KL34AAP					
	Fill-Drain plug FPM	KL34AAQ					

**Pump Single Unit**

17*	Imp. Single Hub >07/2009	150703050	150703050	150703060	150703060	150703080	150703080	150703090	150703100	150703100	150703110
		150703050	150703060	150703070	150703060	150703080	150703090	150703090	150703100	150703110	150703110
15	Suction flange	151000381	151000381	151000381	151000381	151000381	151000381	151000381	151000361	151000361	151000361
16	Pump body	151302200	151302200	151302200	151302200	151302200	151302200	151302200	151302200	151302200	151302200
19	Diffuser cover	154000270	154000270	154000260	154000260	154000270	154000270	154000260	154000151	154000151	154000161
20	Diffuser	152800630	152800630	152800640	152800640	152800630	152800630	152800640	152800541	152800541	152800551
21	Final diffuser cover	154000230	154000220	154000220	154000220	154000230	154000220	154000220	154000200	154000210	154000210
22	Final diffuser	152800650	162800620	162800620	162800620	152800650	162800620	162800620	152800530	162800510	162800510

\* Recommended spare parts - Parti di ricambio consigliate

\* Pièces détachées conseillées - Empfohlene Ersatzteile

**CAM/B - CAM/P  
CA/D - CA/P**

ELP 1 -, 220 - 240

CAM -->	70/33/B	70/34/B	70/45/B	-	120/33/B	120/35/B	120/55/P	200/33/P	200/35/P	
ELP 3 -, 230/400	101810000	101810010	101810020	-	101810030	101810040	101810050	101810060	101810070	
CA -->	70/33/D	70/34/D	70/45/D	70/55/D	120/33/D	120/35/D	120/55/P	200/33/P	200/35/P	200/55/P
	104490000	104490010	104490030	104490040	104490050	104490060	101810170	101810180	101810150	101810160
kW -->	0,75	0,9	1,1	1,5	1,1	1,5	2,2	1,85	2,2	3,0
CA4 -->							120/55/B			
							101810360			
kW -->							0,37			
	CA/B: motors IE1 fitted				CA/P: motors IE2 fitted			CA/D: motors IE3 fitted		

**Motor kit**

1	Shaft rotor complete	KL09AA4	KL09AA6	KL09AA8	-	KL09AA8	KL09ABC	5KL09AAP	5KL09AAP	5KL09AAP	
		KL09AK2	KL09AK3	KL09AK3	KL09AK4	KL09AK3	KL09AK4	5KL09AAQ	5KL09AAQ	5KL09AAQ	5KL09AAR
2*	Bearings - Rings	KL11AAE	KL11AAE	KL11AAC	-	KL11AAC	KL11AAC	5KL11AAB	5KL11AAB	5KL11AAB	
		KL11AAU	KL11AAU	KL11AAU	KL11AAU	KL11AAU	KL11AAU	5KL11AAT	5KL11AAT	5KL11AAT	5KL11AAT
9	Stator	KL25AAS	KL25AAU	KL25AAX	-	KL25AAX	KL25AAZ	5KL25AAG	5KL25AAG	5KL25AAG	
		KL25ADE	KL25ADG	KL25ADG	KL25ADK	KL25ADG	KL25ADK	5KL25AAB	5KL25AAB	5KL25AAB	5KL25AAE
	Motor	-	-	-	-	-	-	-	-	-	
		107234500	107234510	107234510	107234520	107234510	107234520	50001RV00	50001RV00	50001RV00	50002RV00
3	Oil seals - Plugs	KL03ABP	KL03ABP	KL03ABP	-	KL03ABP	KL03ABP	5KL03AAA	5KL03AAA	5KL03AAA	
		KL03ABP	KL03ABP	KL03ABP	KL03ABP	KL03ABP	KL03ABP	5KL03AAA	5KL03AAA	5KL03AAA	5KL03AAA
4	Terminal box	KL30AAA	KL30AAB	KL30AAB	-	KL30AAB	KL30AAB	5KL30AAF	5KL30AAF	5KL30AAF	
		KL30AAA	KL30AAA	KL30AAA	KL30AAA	KL30AAA	KL30AAA	5KL30AAE	5KL30AAE	5KL30AAE	5KL30AAE
6	Tie rods PLM 90	-	-	-	-	-	-	5KL22AAA	5KL22AAA	5KL22AAA	
		-	-	-	-	-	-	5KL22AAA	5KL22AAA	5KL22AAA	5KL22AAA
8	Adaptor	KL21AAE	KL21AAE	KL21AAF	-	KL21AAF	KL21AAF	5KL21AAB	5KL21AAB	5KL21AAB	
		KL21AAF	KL21AAF	KL21AAF	KL21AAF	KL21AAF	KL21AAF	5KL21AAB	5KL21AAB	5KL21AAB	5KL21AAB
10	Motor feet	KL23AAB	KL23AAB	KL23AAA	-	KL23AAA	KL23AAA	5KL23AAF	5KL23AAF	5KL23AAF	
		KL23AAA	KL23AAA	KL23AAA	KL23AAA	KL23AAA	KL23AAA	5KL23AAF	5KL23AAF	5KL23AAF	5KL23AAF
13	Fan cover	KL29AAD	KL29AAD	KL29AAE	-	KL29AAE	KL29AAE	5KL29AAA	5KL29AAA	5KL29AAA	
		KL29AAE	KL29AAE	KL29AAE	KL29AAE	KL29AAE	KL29AAE	5KL29AAA	5KL29AAA	5KL29AAA	5KL29AAA

**Motor Single Unit**

5	Capacitor CAM	150990440	150990450	150990460	-	150990460	150990480	5828AAB	5828AAB	5828AAB	
14	Base with pins	158160680	158160700	158160500		158160500	158160510	5830AAA	5830AAA	5830AAA	
	Base with pins	158160280	158160280	158160280	158160280	158160280	158160280	5830AAA	5830AAA	5830AAA	5830AAA
11	Rear shield NDE							5KL20AAZ	5KL20AAZ	5KL20AAZ	
								5KL20AAZ	5KL20AAZ	5KL20AAZ	5KL20AAZ
12	Fan SM71 - 80 PLM90	140760150	140760150	140760160	-	140760160	140760160	540760010	540760010	540760010	
		140760160	140760160	140760160	140760160	140760160	140760160	540760010	540760010	540760010	540760010

	Motor casing shims	161630010	161630010	161630000	-	161630000	161630000	-	-	-	
		161630000	161630000	161630000	-	161630000	-	-	-	-	-
								161630010			

N/A Not Available

\* Recommended spare parts - Parti di ricambio consigliate

\* Pièces détachées conseillées - Empfohlene Ersatzteile

CA(M)\_5\_Feb12\_EdA