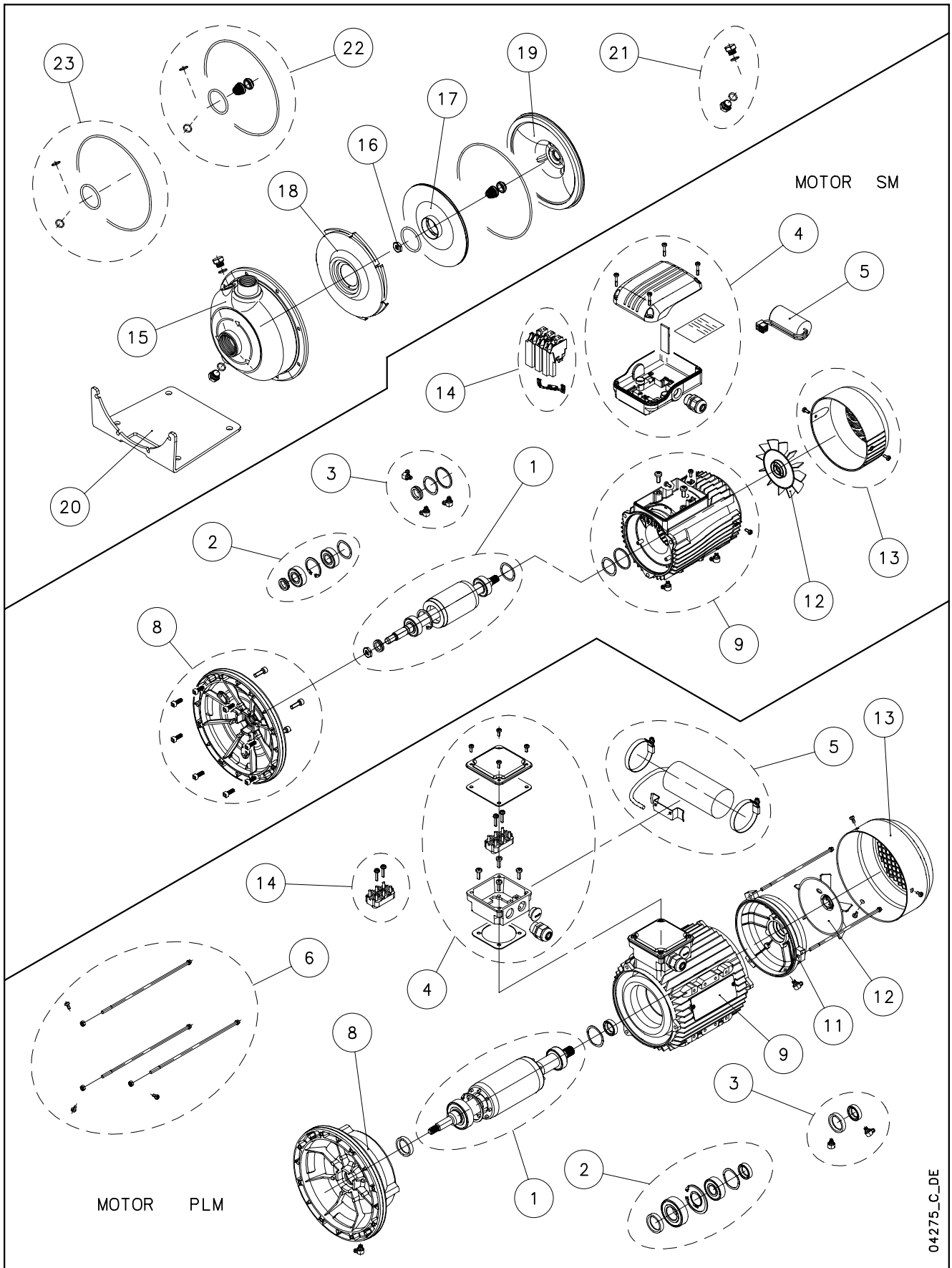


## CEA / CAX



04275\_C\_DE

Lowara, Flygt and Vogel Pumpen are a trademark of Xylem Inc. or one of its subsidiaries. Goulds is a registered trademark of Goulds Pumps, Inc. and is used under license.

N.	Descrizione it	Description en	Description fr	Beschreibung de	Descripción es	Descrição pt
1	Albero rotore completo	Shaft rotor complete	Arbre rotor au complet	Rotorwelle Komplete	Eje rotor complete	Rotor completo
2	Cuscinetti - Anelli	Bearings - Rings	Roulements - Anneaux	Lager - Stopfen	Cojinetes - Anillos	Rolamentos - Anéis
3	Anelli tenuta - Tappi	Oil seals - Plugs	Bagues étanchéité-Bouchons	Abdichtungsringen-Schrauben	Anillos estanqueidad- Tapones	Retenores - Bujões
4	Scatola morsettieria	Terminal box	Boite a bornier	Klemmenkasten	Caja de bornes	Caixa de terminais
5	Condensatore	Capacitor	Condensateur	Kondensator	Kondensador	Condensador
6	Tiranti PLM90	Tie rods PLM90	Tiges PLM90	Zugstangen PLM90	Tirantes PLM90	Tirantes PLM90
8	Lanterna	Adaptor	Lanterne	Laterne	Adaptador	Adaptador
9	Cassa statore	Stator housing	Carcasse stator	Statorgehäuse	Carcasa estator	Carcaça estator
11	Scudo posteriore NDE	Rear shield NDE	Flasque arriere NDE	Hinteren Schild NDE	Escudo posterior NDE	Proteção posterior NDE
12	Ventola	Fan	Ventilateur	Lüfterrad	Ventilador	Ventilador
13	Copriventola	Fan cover	Couvercle de ventilateur	Lüfterradhaube	Tapa ventilador	Cobertura do ventilador
14	Basetta con perni	Base with pins	Bornier avec fiches	Klemmbrett mit zapfen	Soporte de pernos	Caixa de terminais
14	Morsettieria ( Plug-in )	Terminal block ( Plug in )	Bornier enfichable ( Plug in )	Steck-Klemmkasten ( Plug in )	Place de bornes ( Plug in )	Terminais ( Plug in )
15	Corpo pompa	Pump body	Corps de pompe	Pumpengehäuse	Caja bomba	Voluta bomba
16	Dado girante	Impeller nut or bolt	Roue ecrou	Laufmutter	Rodete tuerca	Parafuso do Impulsor
17	Girante	Impeller	Roue	Laufrad	Rodete	Impulsor
18	Diffusore	Diffuser	Diffuseur	Diffusor	Difusor	Difusor
19	Disco porta tenuta	Seal housing plate	Disque de support garniture	Dichtungsdeckel	Disco de alojamiento sello	Dique alojamento do selo
20	Piede pompa	Pump foot	Piede de pompe	Pumpenstützfuss	Bomba pies	Pé da bomba
21	Tappi + OR	Plugs + ORings	Bouchons + joints torique	Schrauben + OR	Tapones + junta tórica	Bujões + OR
22	Kit tenuta mecc. + OR	Mechanical seal + OR kit	Kit garniture mec. + joints toriques	Gleitringdichtung + O-Ring [Satz]	Kit sello mec. + junta tórica	Kit Empanque mecanico + O-Ring
23	Kit guarnizioni OR	O ring kit	Kit joints toriques	Dichtungssatz	Kit juntas tóricas	Kit guarnições OR
N.	Beschrijving nl	Περιγραφή el	Açıklama tr	Kuvaus fi	Описание ru	Opis pl
1	Rotor as compleet	επάνω και το κάτω μέρος του	Rotor mili	Roottori akseli	ось ротора	Walek kompletny (z rotorem)
2	Lagers - Ringen	Τριβεία- δακτύλιοι	Rulmanlar - Ringes	Laakeri - Rengas	Подшипник - кольцами	łożyska - pierścienie
3	Zegel ringen - Vulpluggen	πτερελαίου παρεμβύσματα - πώμα	Fok ringes - Tapalar (Fişindedir)	Ölly tiivisteet - Tulppa	прокладки для нефти - штепсели	Uszczelka olejowa – zatyczki
4	Kabelkast	Πίνακες θερματικών	Terminal Kutu	Liitinkotelon kansi	соединители коробка	Skrzynka zaciskowa
5	Condensator	πυκνωτ	Kondansatör	Kondensaattori	конденсатор	Kondensator
6	Trekstangen PLM90	Ράβδοι σύνδεσμοι PLM90	Çekme çubukları PLM90	Ankkurirauta PLM90	Тяги PLM90	Szpiłki gwintowane PLM90
8	Lantaarnstuk	προσαρμογέα	Adaptör	Adaptér	адаптер	Piasta
9	Statorhuis	Έδρα κατοίκι	Statör karteri	Staattori kaapit	Корпус статор	Stator Nadawcza
11	Achtergedeelte Motorhuis NDE	Πίσω πετάσμα NDE	Arka koruma NDE	Laakerikilpi NDE-pää	назад щит NDE	Tyłna tarcza NDE
12	Ventilator	Ανεμιστήρ	Vantilatör	Tuuletin	вентилятор	Wentylator
13	Ventilatorkap	Ανεμιστήρ Ελάσματα κάλυψης	Vantilatör kapağı	Tuuletinkotelo	вентилятор крышка	Oslona wentylatora
14	Klemmenbord	Θερματικές μονάδες	Kaide bacaklar	Liitinalusta	контактная колодка	Podstawa ze sworzeniami
14	Klemmenbord (Plug in)	Θερματικές μονάδες ( Plug in )	Kaide bacaklar Plug in	Liitinalusta Plug in	контактная колодка Plug in	Podstawa ze sworzeniami Plug in
15	Pomphuis	Αντλί πλαίσια επένδυση	Pompa gövdesi	Pumpu kotelo	Корпус насоса	Korpus pompy
16	Bout de waaier	Φτερωτές στροφέιο μπουλόνι	Rotorun somun	Juoksupyörän pultit	импеллер орех	Wirnika (nakrętka)
17	Waaier	Φτερωτές στροφέιο	Pompa rotorun	Juoksupyörän	импеллер	Wirnik
18	Diffusor	διαχυτήρας	Difüzör	Diffuusioyksikön	диффузор	Dyfuzor
19	Dichtingssteunplaat	Μηχανικό Σφραγίδα Πλάκας	Sızdırmazlık elemanı diski	Tiivisteen lautanen	мех. печать пластинка	Tarcza uszczelki
20	Pomp voet	Αντλί ποδιού	Pompa ayak	Pumpu jalka	насос стопы	Pompy silnika
21	Valpluggen + O-ring	πώμα+ OR	Şarj fişi + O-Ring	Tulppa + O-rengassarja	штепсели + OR	Zatyczki (korek) + OR
22	Kit mech. afdichting + O-ring	Μηχανική σφραγίδα Σετ + OR	Mekanik salmastra kiti + O-Ring	Mek. akseliiviste + O-rengassarja	Комплект мех. печать + OR	Zestaw uszczelniający mech. + OR
23	Set O-ringafdichtingen	παρεμβύσματα OR Σετ	O-Ring kiti	O-rengassarja	Комплект прокладок OR	Zestaw uszczelkek OR

## CEAM/A - CEAM/P

ELP 1 ~, 2P  
220 - 240 50

CEAM -->

	70/3/A	70/5/A	80/5/A	120/5/A	210/3/A	210/4/A	210/5/P
	107330000	107330010	107330020	107330040	107330060	107330070	101800080
		120/3/A	210/2/A		370/1/A	370/2/A	370/3/P
		107330030	107330050		107330090	107330100	101800110
kW -->	0,37	0,55	0,75	0,9	1,1	1,5	1,85
SM							PLM

KIT

### Pump

16-17*	Impeller + nut		KL04AFV	KL04AFW	KL04AFX	KL04AFZ	KL04AHC	KL04AHD	KL04AHE
				KL04AFY	KL04AHB		KL04AHF	KL04AHG	KL04AHH
22*	Mech Seal + OR	Material-->	<b>VBPGF</b>	<b>VBEGG</b>	<b>VBVGG</b>	<b>U3Q1KGG</b>	<b>U3Q1TGG</b>	-->CEA-V D.14	
			KL01ABD	KL01ABE	KL01ABF	KL01ADV	KL01ADW		
	Mech Seal + OR	Material-->	<b>JQ1EGG</b>	<b>U3CEGG</b>	<b>JQ1VGG</b>	<b>U3CVGG</b>	<b>U3Q1VGG</b>		
			KL01ADR	KL01ADS	KL01ADT	KL01ADU	KL01ADZ		
23*	OR NBR Kit		KL02ABN						
	OR EPDM Kit		KL02ABP						
	OR FPM Kit		KL02ABQ						
	OR FTFE Kit		KL02ABR						
21	Fill-Drain plug NBR		KL34AAN						
	Fill-Drain plug EPDM		KL34AAP						
	Fill-Drain plug FPM		KL34AAQ						
	Fill-Drain plug PTFE		KL34AAR						

### Motor

1	Shaft rotor complete		KL09AAA	KL09AAH	KL09AAK	KL09AAL	KL09AAM	KL09AAN	5KL09AAS
2*	Bearings - Rings		KL11AAA	KL11AAA	KL11AAA	KL11AAA	KL11AAC	KL11AAC	5KL11AAA
	Bearings Type		6202/6202				6204/6204		6203/6205
9	Stator housing		KL25AAA	KL25AAC	KL25AAE	KL25AAG	KL25AAL	KL25AAN	5KL25AAG
3	Oil seals - Plugs		KL03ABP	KL03ABP	KL03ABP	KL03ABP	KL03ABP	KL03ABP	5KL03AAA
4	Terminal box		KL30AAA	KL30AAA	KL30AAA	KL30AAB	KL30AAA	KL30AAB	5KL30AAF
6	Tie rods PLM 90								5KL22AAA
8	Adaptor		KL21AAA	KL21AAB	KL21AAB	KL21AAB	KL21AAC	KL21AAC	5KL21AAA
13	Fan cover		KL29AAC	KL29AAD	KL29AAD	KL29AAD	KL29AAE	KL29AAE	5KL29AAA

### SINGLE UNIT

#### Pump

19	Seal housing plate		160102450	160102450	160102450	160102450	160102450	160102450	160102450
15	Pump body		151300850	151300850	151300850	151300850	151300860	151300860	151300860
				151300850	151300860		151300870	151300870	151300870
18	Diffuser		162800880	162800880	162800880	162800880	162800890	162800890	162800890
				162800880			162800890	162800890	162800890
20	Support foot		161403630	161403630	161403630	161403630	161403630	161403630	161403630

#### Motor

5	Capacitor 1 ~ 2.2 KW uF/450V		150990420	150990430	150990440	150990450	150990460	150990480	5828AAB 70
14	Base with pins		158160620	158160660	158160680	158160700	158160500	158160510	5830AAA
11	Rear shield NDE								5KL20AAZ
12	Fan SM71 - 80 / PLM90		140760150	140760150	140760150	140760150	140760160	140760160	540760010

\* Recommended spare parts - Parti di ricambio consigliate

\* Pièces détachées conseillées - Empfohlene Ersatzteile

CEA(M)\_5\_June11\_EdA

## CEA/A - CEA/C- CEA/P

ELP 3 ~, 2P  
230/400 50

CEA --->

	70/3/A	70/5/A	80/5/C	120/5/C	210/3/C	210/4/C	210/5/C	370/5/P
	107330130	107330140	104290020	104290040	104290060	104290070	104290080	101800260
		120/3/A	210/2/C		370/1/C	370/2/C	370/3/C	
		107330160	104290050		104290090	104290100	104290110	
kw ->	0,37	0,55	0,75	0,9	1,1	1,5	1,85	3,0
	SM		SM IE2			PLM IE2		

KIT

### Pump

16-17*	Impeller + nut		KL04AFV	KL04AFW	KL04AFX	KL04AFZ	KL04AHC	KL04AHD	KL04AHE	KL04AHK
				KL04AFY	KL04AHB		KL04AHF	KL04AHG	KL04AHH	
22*	Mech Seal + OR	Material-->	VBPGF	VBEGG	VBVGG	U3Q1KGG	U3Q1TGG			
			KL01ABD	KL01ABE	KL01ABF	KL01ADV	KL01ADW			
	Mech Seal + OR	Material-->	JQ1EGG	U3CEGG	JQ1VGG	U3CVGG	U3Q1VGG	---->CEA-V		
			KL01ADR	KL01ADS	KL01ADT	KL01ADU	KL01ADZ	D.14		
23*	OR NBR Kit		KL02ABN							
	OR EPDM Kit		KL02ABP							
	OR FPM Kit		KL02ABQ							
	OR PTFE Kit		KL02ABR							
21	Fill-Drain plug NBR		KL34AAN							
	Fill-Drain plug EPDM		KL34AAP							
	Fill-Drain plug FPM		KL34AAQ							
	Fill-Drain plug PTFE		KL34AAR							

### Motor

1	Shaft rotor complete	KL09AAA	KL09AAB	KL09AAF	KL09AAG	KL09AAG	5KL09ACQ	5KL09ACR	5KL09AAT
2*	Bearings - Rings	KL11AAA	KL11AAA	KL11AAC	KL11AAC	KL11AAC	5KL11AAA	5KL11AAA	5KL11AAS
	Bearings Type	6202/6202		6204/6204			6203/6205		6203/6205HE
9	Stator housing	KL25AAB	KL25AAD	KL25AC5	KL25AC7	KL25AC7	5KL25AAA	5KL25AAB	5KL25AAE
3	Oil seals - Plugs	KL03ABP	KL03ABP	KL03ABP	KL03ABP	KL03ABP	5KL03AAA	5KL03AAA	5KL03AAA
4	Terminal box	KL30AAA	KL30AAA	KL30AAA	KL30AAA	KL30AAA	5KL30AAE	5KL30AAE	5KL30AAE
6	Tie rods PLM 90						5KL22AAA	5KL22AAA	5KL22AAA
8	Adaptor	KL21AAA	KL21AAB	KL21AAC	KL21AAC	KL21AAC	5KL21AAA	5KL21AAA	5KL21AAA
13	Fan cover	KL29AAC	KL29AAD	KL29AAE	KL29AAE	KL29AAE	5KL29AAA	5KL29AAA	5KL29AAA

### SINGLE UNIT

#### Pump

19	Seal housing plate	160102450	160102450	160102450	160102450	160102450	160102450	160102450	160102450
15	Pump body	151300850	151300850	151300850	151300850	151300860	151300860	151300860	151300870
			151300850	151300860		151300870	151300870	151300870	
18	Diffuser	162800880	162800880	162800880	162800880	162800890	162800890	162800890	162800890
			162800880	162800890		162800890	162800890	162800890	
20	Support foot	161403630	161403630	161403630	161403630	161403630	161403630	161403630	161403630

#### Motor

5	Capacitor 1 ~ 2.2 KW								
14	Base with pins	158160280	158160280	158160280	158160280	158160280	5830AAA	5830AAA	5830AAA
11	Rear shield NDE						5KL20AAZ	5KL20AAZ	5KL20AAZ
12	Fan SM71 - 80 / PLM90	140760150	140760150	140760160	140760160	140760160	540760010	540760010	540760010

\* Recommended spare parts - Parti di ricambio consigliate

\* Pièces détachées conseillées - Empfohlene Ersatzteile

CEA(M)\_5\_June11\_EdA

## CEA4/A

ELP 3 ~, 4P  
230/400 50

CEA4 --->

	70/3/A	70/5/A	80/5/A	210/3/A	210/4/A	210/5/A
	107330530	107330550	107330555	107330590	107330600	107330610
		120/3/A	120/5/A			
		107330560	107330570			
kw ->	0.25	0.25	0.25	0.25	0.25	0.25
SM						

KIT

### Pump

16-17*	Impeller + nut		KL04AFV	KL04AFW	KL04AFX	KL04AHC	KL04AHD	KL04AHE
				KL04AFY	KL04AFZ			
22*	Mech Seal + OR	Material-->	VBPGF	VBEGG	VBVGG	U3Q1KGG	U3Q1TGG	
			KL01ABD	KL01ABE	KL01ABF	KL01ADV	KL01ADW	
	Mech Seal + OR	Material-->	JQ1EGG	U3CEGG	JQ1VGG	U3CVGG	U3Q1VGG	--->CEA-V
			KL01ADR	KL01ADS	KL01ADT	KL01ADU	KL01ADZ	D.14
23*	OR NBR Kit		KL02ABN					
	OR EPDM Kit		KL02ABP					
	OR FPM Kit		KL02ABQ					
	OR FTFE Kit		KL02ABR					
21	Fill-Drain plug NBR		KL34AAN					
	Fill-Drain plug EPDM		KL34AAP					
	Fill-Drain plug FPM		KL34AAQ					
	Fill-Drain plug PTFE		KL34AAR					

### Motor

1	Shaft rotor complete		KL09AAB	KL09AAB	KL09AAB	KL09AAB	KL09AAB	KL09AAB
2*	Bearings - Rings		KL11AAA	KL11AAA	KL11AAA	KL11AAA	KL11AAA	KL11AAA
	Bearings Type		6202/6202					
9	Stator housing		KL25ABC	KL25ABC	KL25ABC	KL25ABC	KL25ABC	KL25ABC
3	Oil seals - Plugs		KL03ABP	KL03ABP	KL03ABP	KL03ABP	KL03ABP	KL03ABP
4	Terminal box		KL30AAA	KL30AAA	KL30AAA	KL30AAA	KL30AAA	KL30AAA
8	Adaptor		KL21AAB	KL21AAB	KL21AAB	KL21AAB	KL21AAB	KL21AAB
13	Fan cover		KL29AAD	KL29AAD	KL29AAD	KL29AAD	KL29AAD	KL29AAD

### SINGLE UNIT

#### Pump

19	Seal housing plate		160102450	160102450	160102450	160102450	160102450	160102450
15	Pump body		151300850	151300850	151300850	151300860	151300860	151300860
				151300850	151300860			
18	Diffuser		162800880	162800880	162800880	162800890	162800890	162800890
				162800880	162800880			
20	Support foot		161403630	161403630	161403630	161403630	161403630	161403630

You can use either Nut 167000230 or Nut 167000210

#### Motor

5	Capacitor 1 ~ 2.2 KW							
14	Base with pins		158160280	158160280	158160280	158160280	158160280	158160280
11	Rear shield NDE, PLM							
12	Fan SM71		140760150	140760150	140760150	140760150	140760150	140760150

\* Recommended spare parts - Parti di ricambio consigliate

\* Pièces détachées conseillées - Empfohlene Ersatzteile

CEA(M)\_5\_June11\_Eda

# xylem

