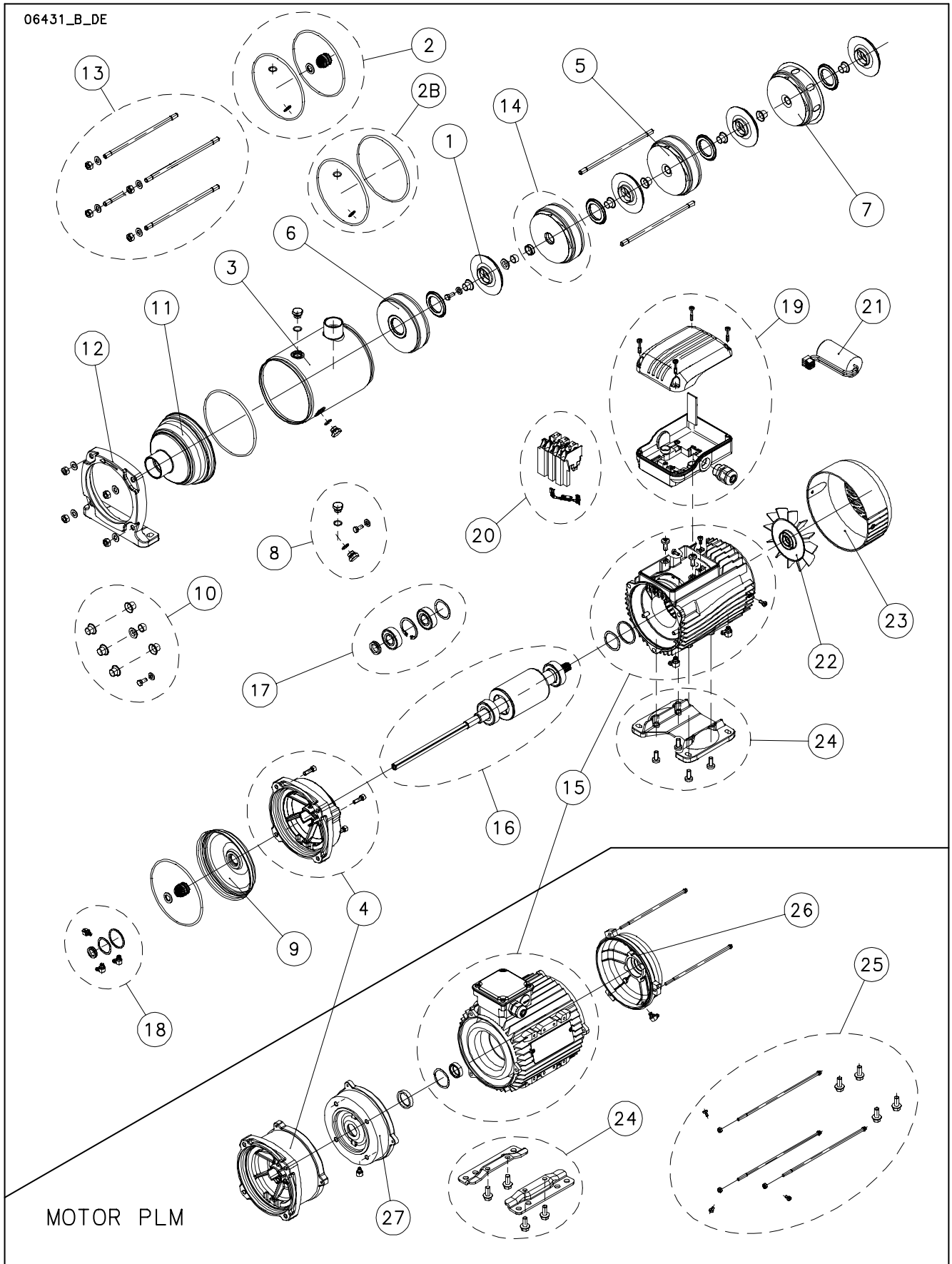


1, 3, 5, 10, 15, 22 HM..S-N "SLEEVE DESIGN"

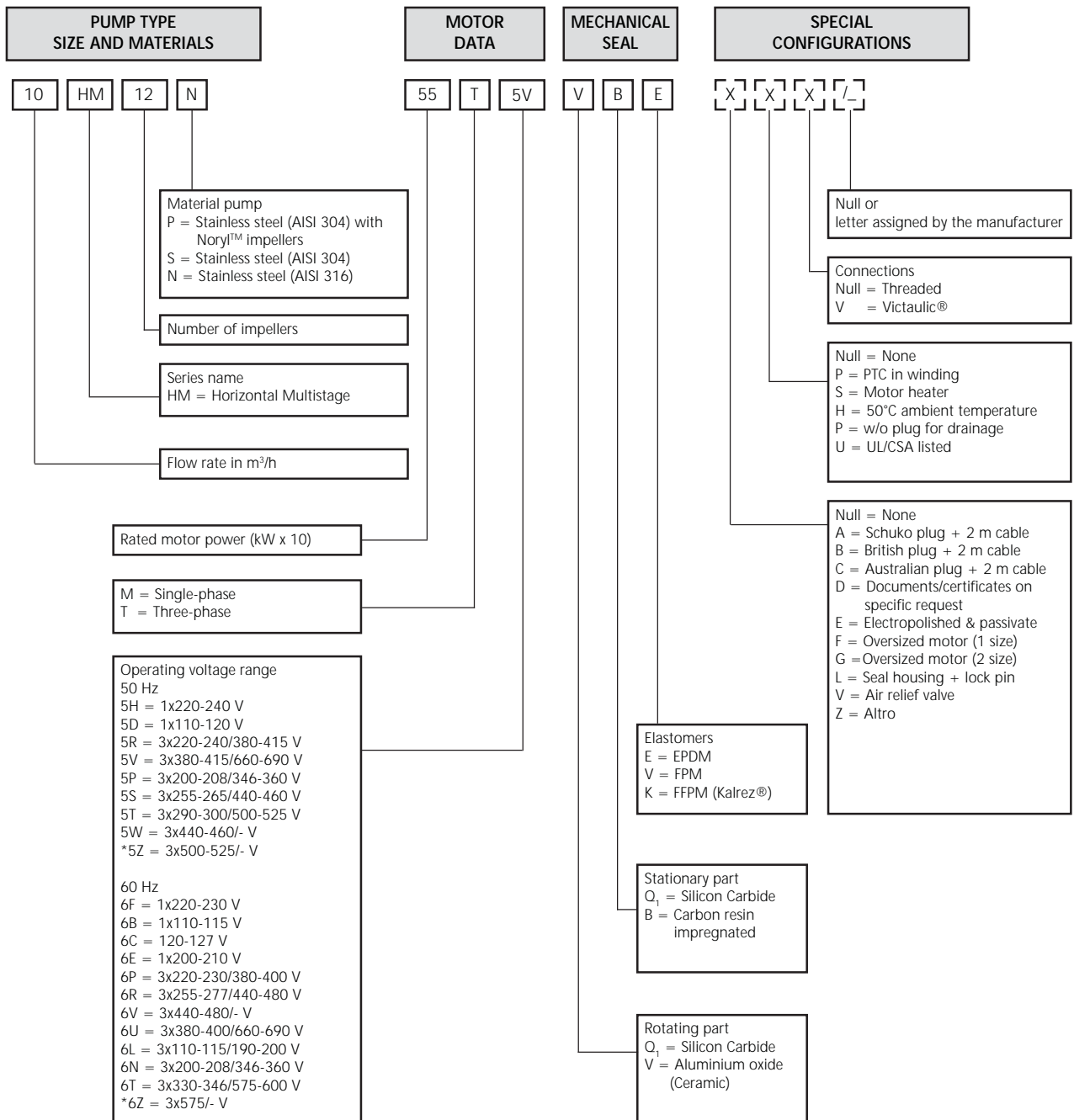


Lowara and Vogel Pumpen are a trademark of Xylem Inc. or one of its subsidiaries. Goulds is a registered trademark of Goulds Pumps, Inc. and is used under license.

N.	Descrizione it	Description en	Description fr	Beschreibung de	Descripción es	Descrição pt
1	Girante	Impeller	Roue	Laufrad	Rodete	Impulsor
2	Kit tenuta mecc. + OR	Mechanical seal + OR kit	Kit garniture méc. + joints toriques	Gleitringdichtung + OR	Kit sello mec. + junta tórica	Kit Empanque mecanico + O-Ring
2b	Kit guarnizioni OR	O ring kit	Kit joints toriques	O-Ring Dichtungen Bausatz	Kit juntas tóricas	Kit guarnições OR
3	Camicia	Sleeve	Chemise	Mantel	Camisa	Camisa
4	Lanterna + viti	Adaptor + Screws	Lanterne + Visserie	Passfeder + Schrauben	Adaptador + Tornillos	Adaptador + parafusos
5	Diffusore	Diffuser	Diffuseur	Diffusor	Difusor	Difusor
6	Stadio iniziale	Initial stage	Premier étage	Erste Stufe Diffusor	Etapa initial	Primeira célula
7	Diffusore finale	Last stage diffuser	Diffuseur dernier étage	End Diffusor	Difusor final	Difusor final
8	Tappi + OR / Vite girante	Plug + ORing / Impeller screw	Bouchon + joint torique / Roue Vie	Stecker + OR / Laufrad Schraube	Tapón + junta tórica / Tornillo de rodete	Bujão + OR / Parafuso do impulsor
9	Disco portatenuta	Seal housing disc	Disque d'étanchéité	Dichtungsscheibe	Disco de alojamiento retén	Disco porta-vedante
10	Kit distanziali girante + Vite girante	Impeller spacers kit + Impeller screw	Kit entretoises de roue + Roue Vie	Laufrad DistanzscheibenSatz + Schraube	Kit espaciadores + Tornillo de rodete	Kit espaciadores + Parafuso do impulsor
11	Testata	Head	Tête	Kopf	Cabezal	Cabeça
12	Anello con piede	Ring with foot	Anneau avec pied	Ring mit Fuß	Anillo a pie	Anel com pé
13	Tiranti pompa	Pump tie rods	Tiges de pompe	Pumpen spannstangen	Tirantes de bomba	Tirantes de bomba
14	Kit diffusore con boccola Widia	Diffuser Widia tungsten bush kit	Kit diffuseur douille Widia	Satz Diffusor mit Widia Büchse	Kit difusor casquillo Widia	Kit difusor com Widia tungstênio bucha
15	Cassa statore	Stator housing	Carcasse stator	Statorgehäuse	Carcasa estator	Carcaça estator
16	Albero rotore completo	Shaft rotor complete	Arbre rotor au complet	Rotorwelle Komplete	Eje rotor complete	Vejo rotor completo
17	Cuscinetti - Anelli	Bearings - Rings	Roulements - Anneaux	Lagers - Rings	Cojinetes - Anillos	Rolamentos - Anels
18	Anelli tenuta - Tappi	Oil seals - Plugs	Bagues étanchéité-Bouchons	Abdichtungsringen-Schrauben	Anillos estanqueidad- Tapones	Retenores - Bujões
19	Scatola morsettiera	Terminal box	Boite a bornier	Klemmenkasten	Caja de bornes	Caixa de terminais
20	Morsettiera / Plug in	Terminal block / Plug in	Bornier enfichable / Plug in	Steck-Klemmkasten / Plug in	Place de bornes / Plug in	Terminais / Plug in
21	Condensatore	Capacitor	Condensateur	Kondensator	Condensador	Condensador
22	Ventola	Fan	Ventilateur	Lüfterrad	Ventilador	Ventilador
23	Copriventola	Fan cover	Couvercle de ventilateur	Lüfterradhaube	Tapa ventilador	Cobertura do ventilador
24	Piede motore	Motor foot	Pied de moteur	Motorfuß	Pie del motor	Pé do motor
25	Tiranti / Viteria motore	Motor Tie rods / Screws	Tiges / Visse moteur	Motor- Spannstangen / Schrauben	Tirantes / Tornillos motor	Tirantes / Parafusos motor
26	Scudo posteriore NDE	Rear shield NDE	Flasque arriere NDE	Hinteren Schild NDE	Escudo posterior NDE	Proteção posterior NDE
27	Scudo anteriore DE	Front shield DE	Flasque antérieur DE	Vorderer kasten DE	Escudo anterior DE	Escudo dianteiro DE
N.	Beschrijving nl	Περιγραφή el	Açıklama tr	Kuvaus fi	Описание ru	Opis pl
1	Waaier	Φτερωτές στροφέιο	Pompa rotorun	Juoksupyörän	импеллер	Wirnik
2	Kit mech. afdichting + O-ring	Μηχανική σφραγίδα στεγανότητας Σετ + OR	Mekanik salmastra kiti + O-Ring	Mek. akselitivistie + O-rengassarja	Комплект мех. печать + OR	Zestaw uszczelniający mech. + OR
2b	Set O-ringafdichtingen	τσιμουχών OR Σετ	O-Ring conta kiti	O-rengassarja	Комплект прокладок OR	Zestaw uszczelek OR
3	Mantel	Κέλυφος	Gömlek	Muhvi	Муфта	Plaszcz
4	Lantaarnstuk met schroeven	προσαρμογέα + βιδών	Adaptör + Vida	Adaptör + Ruuvi	адаптер + винтов	Piasta + łączników gwintowych
5	Diffusor	διαχυτήρας	Difüzör	Diffuusioyksikön	Диффузор	Dyfuzor
6	Eerste trap	Πρώτο στάδιο	ilk kademe	Ensivaihe	начальной стадии	Dyfuzor Początkowa
7	Diffusor laatste trap	Τελικός διαχυτήρας	Son difüzör	Loppuvaiheen diffuusori	Концевой диффузор	Dyfuzor końcowy
8	Pluggen + OR / Waaier schroef	Πώμα + OR / βιδών στροφέιο	Fişi + O-Ring / Rotorunu vida	Tulppa + Oring / Juoksupyörän ihmishenkiä	штпсель + OR / импеллер винтов	Zatyczka + OR / Śrubowy wirnika
9	Dichtingssteunplaat	Δίσκος μηχανικού στυπιοθήλιπη	Sızdırmazlık diskı	Tiivisteenn kannatuslevy	Диск держателя прокладки	Tarcza uszczelki
10	Waaier spacer set + Waaier schroef	Αποστάτες περωτής που + βιδών στροφέιο	Pompa rotor ayırıcılar seti + Rotorunu vida	Juoksupyöräna välilyvyt + ihmishenkiä	Комплект импеллер: распорки + винтов	Wirnik przekładki kit + Śrubowy wirnika
11	Kop	Κεφαλή	Kafa	Pääkohta	головка	Głowica
12	Ring met voet	Ρινγκ με Πόδι	Ayak halkası	Rengas jalka	Кольцо с ног	Pierścień z podnóża
13	Pomp trekstangen	Ράβδοι σύνδεσμοι αντλία	Çekme çubukları pompası	Pumppu ankkurirauta	Насос адаптер	Pompy Szpilki gwintowane
14	Set Widia diffusoribus	Σετ διαχυτήρας με Widia κουζινέτο	Widia burçlu difüzör kiti	Kit diffusori Widia holkki	Комплект диффузора втулки Widia	Zestaw dyfuzora tulejki Widia Wolfram
15	Statorhuis	Έδρα κατοίκι	Stator karteri	Staatortr kaapit	Корпус статора	Stator Nadawcza
16	Rotor as compleet	επάνω και το κάτω μέρος του	Rotor mili	Roottori akseli	ось ротора	Walek kompletny (z rotorem)
17	Lagers - Ringen	Τριβεία- δακτύλιοι	Rulmanlar - Ringes	Laakeri - Rengas	Подшипник - кольцами	Łożyska - pierścienie
18	Zegel ringen - Vulpluggen	πετρελαίου παρεμβύσματα - πώμα	Fok ringes - Burg/mafsal	Öljy tiivistee - Tulppa	прокладки для нефти - штпсели	Uszczelka olejowa - zatyczki
19	Kabelkast	Πίνακες θερματικών	Terminal Kutu	Liitinkotelon kansi	соединители коробка	Skrzynka zaciskowa
20	Klemmenbord / Plug in	Τερματικές μονάδες / Plug in	Kaide bacaklar / Plug in	Liitinalusta / Plug in	контактная колодка / Plug in	Podstawa ze sworzeniami Plug in
21	Condensator	πικνωτ	Kondansatör	Kondensaattori	конденсатор	Kondensator
22	Ventilator	Ανεμιστήρ	Vantilatör	Tuuletin	вентилятор	Wentylator
23	Ventilatorkap	Ανεμιστήρ Ελάσματα κάλυψης	Vantilatör kapağı	Tuuletin kante	вентилятор крышка	Oslona wentylatora
24	Motor voet	Πόδι κινητήρα	Makina ayak	Moottori jalka	Корпус статора + двигатель стопы	Silnik noga mebla
25	Trekstangen / Schroevena motor	Κινητήρα ράβδοι σύνδεσμοι / βίδες	Makina çekme çubukları / Vidalar alışveriş	Moottorin Ankkurirauta / Ruuvit	мотора адаптер / винтами	Silnika Szpilki gwintowane / Srubeczka
26	Achtergedeelte Motorhuis NDE	Πίσω πετάσμα NDE	Arka koruma NDE	Renkaat kumit NDE	назад щит NDE	Tylna tarcza NDE
27	Voorzijde Motorhuis DE	Πίσω μέτωπο DE	Ön koruma DE	Etusuojus DE	передний щит DE	Przednia tarcza DE



e-HM™ SERIES IDENTIFICATION CODE



EXAMPLE: 10HM12N55T5VQBE
HM series electric pump, flow rate 10 m³/h, number of impellers 12, N version (AISI 316), rated motor power 5,5 kW, three-phase 50 Hz, voltage 380-415/660-690 V, Silicon/Carbide/EPDM mechanical seal.

* For uses other than EN 60335-2-41.
For special configurations please contact the sales network.



1HM..S "Sleeve Design" from 7 stages

ELP 2 P		1HM07S05M	1HM08S05M	1HM09S05M	1HM11S05M	1HM12S05M	1HM14S07M	1HM16S07M	1HM18S07M	1HM20S09M
ELP 1-, 220-240V 50Hz ->		104605261	104605271	104605281	104605301	104605311	104605331	104605351	104605371	104605391
		104605411	104605441							
ELP 3-, 230-400V 50Hz ->		104604061	104604071	104604081	104604101	104604111	104604131	104604151	104604171	104604191
		104604211	104604241							
Stages number ->		7	8	9	11	12	14	16	18	20
		22	25							
kW (M) ->		0,55			0,75			0,95		
		0,95	1,1							
kW (T) ->		0,55			0,75			1,1		
		1,1	1,5							

Pump Kit

*2	Mech D14 + ORings ->	VBE	KL01AFF	Std -> Seal VBE - OR EPDM upto 16 stages Std -> Seal QBE - OR EPDM since 18 stages 1-5HM Sleeve Design
		QBE	KL01AFG	
		QQE	KL01AFH	
		VBV	KL01AFK	
		QBV	KL01AFL	
		QQV	KL01AFM	
		QBK	KL01AFU	
		QQK	KL01AFV	
*2b	OR EPDM (like item 2, less mech) OR FPM (like item 2, less mech) OR FFKM (like item 2, less mech)	KL02ACE KL02ACH KL02ACM		
8	Plugs S.S. EPDM + imp. screw Plugs S.S. FPM + imp. screw Plugs S.S. FFKM + imp. screw	KL34AA0 KL34AA3 KL34AA5		

Pump Kit and Single Unit

3	Sleeve with pipe	156504200	156504220	156504240	156504270	156504280	156504320	156504350	156504380	156504420
		156504440	156504500							
13	Pump tie rods	KL40AAG	KL40AAK	KL40AAM	KL40AAQ	KL40AAR	KL40AAV	KL40AAY	KL40AA1	KL40AA4
		KL40AA6	KL40AA8							
*1	Impeller A304	150703600								
5	Diffuser	152803110								
		5	5	6	8	9	11	13	14	16
		18	21							
6	First stage diffuser	152802910								
7	Last stage diffuser w/wear ring	152803510								
9	Seal housing disc with wing	150104130								
10	Impeller spacers (n. 6/set) kit ->	KL07AAG								
		7	3	4	5	6	7			
	->	7	8							
11	Head	151404100								
12	Ring with foot	161431570								
14	Diffuser with bearing	152803210								
16	Shaft rotor complete pumpshaft M	KL09AEL	KL09AEM	KL09AEN	KL09AEP	KL09AEQ	KL09AER	KL09AES	KL09AET	KL09AEU
		KL09AEV	KL09AEW							
	Shaft rotor complete pumpshaft T	KL09AEX	KL09AEY	KL09AEZ	KL09AE0	KL09AE1	KL09AE2	KL09AE3	KL09AE4	KL09AE5
		KL09AE6	KL09AE7							

Motor kit

		kW ->		0.55	0.75	0.95	1.1	1.5
4	Adaptor w/screws	1~		KL21AAR	KL21AAR	KL21AAR	KL21AAS	
		3~		KL21AAR	KL21AAS	KL21AAS	KL21AAS	KL21AAS
15	Motor casing + Stator	1~		KL25AAC	KL25AAE	KL25AAG	KL25AAL	
		3~		KL25AAD	KL25ADD	KL25ADF	KL25ADF	KL25ADH
17	Bearings - Rings	1~		KL11AAB	KL11AAB	KL11AAB	KL11AAU	
				6202/6302			6204/6204HE	
	Bearings - Rings	3~		KL11AAB	KL11AAU	KL11AAU	KL11AAU	KL11AAU
				6202/6302	6204/6204HE			
18	Oil seals - Plugs	1~ / 3~		KL03ABP	KL03ABP	KL03ABP	KL03ABP	KL03ABP
19	Terminal box	1~		KL30AAA	KL30AAA	KL30AAB	KL30AAB	
		3~		KL30AAA	KL30AAA	KL30AAA	KL30AAA	KL30AAA
23	Fan cover w/screws	1~		KL29AAD	KL29AAD	KL29AAD	KL29AAE	
		3~		KL29AAD	KL29AAE	KL29AAE	KL29AAE	KL29AAE
24	Motor foot/feet	1~		KL23AAE	KL23AAE	KL23AAE	KL23AAD	
		3~		KL23AAE	KL23AAD	KL23AAD	KL23AAD	KL23AAD
25	Motor Tie rods PLM90	1~ / 3~						
26	Rear shield NDE	1~ / 3~						

Motor Single Unit

20	Terminal block	1~	158160660	158160680	158160700	158160500	
	Terminal block	3~	158160280	158160280	158160280	158160280	158160280
21	Capacitor	1~	150990430	150990440	150990450	150990460	
		uF ->		16	20	25	30
22	Fan SM63 -> 80	1~	140760150	140760150	140760150	140760160	
		3~	140760150	140760160	140760160	140760160	140760160

* Recommended spare parts - Parti di ricambio consigliate
* Pièces détachées conseillées - Empfohlene Ersatzteile

3HM..S "Sleeve Design" from 7 Stages

ELP 2 P		3HM07S05M	3HM08S07M	3HM09S07M	3HM10S07M	3HM11S09	3HM12S09	3HM13S11M	3HM14S15M	3HM16S15M
ELP 1-, 220-240V 50Hz ->		104605551	104605561	104605571	104605581	104605591	104605601	104605611	104605621	104605641
		3HM17S15M	3HM19S15M	3HM21S22M						
ELP 3-, 230-400V 50Hz ->		104605651	104605671	104605691						
		3HM07S07T	3HM08S07T	3HM09S11T	3HM10S11T	3HM11S11T	3HM12S11T	3HM13S15T	3HM14S15T	3HM16S15T
		104604351	104604361	104604371	104604381	104604391	104604401	104604411	104604421	104604441
		3HM17S15T	3HM19S22T	3HM21S22T						
		104604451	104604471	104604491						
Stages number ->		7	8	9	10	11	12	13	14	16
		17	19	21						
kW (M) ->		0.55		0.75		0.95		1.1		1.5
kW (T) ->			1.5		2.2					
			0.75			1.1			1.5	
		1.5		2.2						

Pump Kit

*2	Mech D14 + ORings ->	VBE	KL01AFF	Std -> Seal VBE - OR EPDM upto 13 stages
		QBE	KL01AFG	Std -> Seal QBE - OR EPDM since 14 stages
		QOE	KL01AFH	
		VBV	KL01AFK	
		QBV	KL01AFL	
		QQV	KL01AFM	
		QBK	KL01AFU	
		QKK	KL01AFV	1-5HM Sleeve Design
*2b	OR EPDM (like item 2, less mech)	KL02ACE		
	OR FPM (like item 2, less mech)	KL02ACH		
	OR FFKM (like item 2, less mech)	KL02ACM		
8	Plugs S.S. EPDM + imp. screw	KL34AA0		
	Plugs S.S. FPM + imp. screw	KL34AA3		
	Plugs S.S. FFKM + imp. screw	KL34AA5		

Pump Kit and Single Unit

3	Sleeve with pipe	156504200	156504220	156504240	156504260	156504270	156504280	156504300	156504320	156504350
13	Pump tie rods	156504360	156504400	156504430						
		KL40AAG	KL40AAK	KL40AAM	KL40AAP	KL40AAQ	KL40AAR	KL40AAT	KL40AAV	KL40AAY
*1	Impeller A304	150703610								
5	Diffuser	152803110								
		5	5	6	7	8	9	10	11	13
		13	15	17						
6	First stage diffuser	152802910								
7	Last stage diffuser w/wear ring	152803510								
9	Seal housing disc with wing	150104130								
10	Impeller spacers (n. 6/set)	KL07AAG								
		kit ->		3			4			5
	->	6		7						
11	Head	151404100								
12	Ring with foot	161431570								
14	Diffuser with bearing	152803210								
16	Shaft rotor complete pumpshaft	KL09AEL	KL09AE8	KL09AE9	KL09AFA	KL09AFB	KL09AFC	KL09AFD	KL09AFE	KL09AFF
	M	KL09AFG	KL09AFH	KL09AFK						
	Shaft rotor complete pumpshaft	KL09AFL	KL09AFM	KL09AFN	KL09AFP	KL09AFQ	KL09AFR	KL09AFS	KL09AFT	KL09AFU
	T	KL09AFV	KL09AFW	KL09AFX						

Motor kit

		kW ->		0.55	0.75	0.95	1.1	1.5	2.2
4	Adaptor w/screws	1~	KL21AAR	KL21AAR	KL21AAR	KL21AAS	KL21AAS	KL21AAS	5KL21AAG
		3~	-	KL21AAS	-	KL21AAS	KL21AAS	KL21AAS	5KL21AAG
15	Motor casing + Stator	1~	KL25AAC	KL25AAE	KL25AAG	KL25AAL	KL25AAN	KL25AABQ	
		3~	-	KL25ADD	-	KL25ADF	KL25ADH	5KL25AAB	
17	Bearings - Rings	1~	KL11AAB	KL11AAB	KL11AAB	KL11AAU	KL11AAU	KL11AAU	KL11AAU
			6202/6302			6204/6204HE			
		3~	-	KL11AAU	-	KL11AAU	KL11AAU	5KL11AAY	
			-	6204/6204HE				6204/6305HE	
18	Oil seals - Plugs	1~ / 3~	KL03ABP	KL03ABP	KL03ABP	KL03ABP	KL03ABP	KL03ABP	5KL03AAA
19	Terminal box	1~	KL30AAA	KL30AAA	KL30AAB	KL30AAB	KL30AAB	KL30AAB	5KL30AC2
		3~	-	KL30AAA	-	KL30AAA	KL30AAA	KL30AAA	5KL30AAE
23	Fan cover w/screws	1~	KL29AAD	KL29AAD	KL29AAD	KL29AAE	KL29AAE	KL29AAA	5KL29AAA
		3~	-	KL29AAE	-	KL29AAE	KL29AAE	KL29AAE	5KL29AAA
24	Motor foot/feet	1~	KL23AAE	KL23AAE	KL23AAE	KL23AAD	KL23AAD	KL23AAA	5KL23AAA
		3~	-	KL23AAD	KL23AAD	KL23AAD	KL23AAD	KL23AAD	5KL23AAA
25	Motor Tie rods PLM90	1~ / 3~							5KL22AAA
26	Rear shield NDE	1~ / 3~							5KL20AA7

Motor Single Unit

20	Terminal block	1~	158160660	158160680	158160700	158160500	158160510	5KL30AC4
	Terminal block	3~	-	158160280	-	158160280	158160280	5830AAA
21	Capacitor	1~	150990430	150990440	150990450	150990460	150990480	150990621
								150990631
		uF ->	16	20	25	30	40	30+40
22	Fan SM63 -> 80 PLM90	1~	140760150	140760150	140760150	140760160	140760160	540760010
		3~	-	140760160	-	140760160	140760160	540760010

* Recommended spare parts - Parti di ricambio consigliate

* Pièces détachées conseillées - Empfohlene Ersatzteile

5HM..S "Sleeve Design" from 6 stages

ELP 2 P		5HM06S07M	5HM07S09M	5HM08S09M	5HM09S11M	5HM10S15M	5HM11S15M	5HM12S15M	5HM13S22M	5HM14S22M
ELP 1-, 220-240V 50Hz ->		104605791	104605801	104605811	104605821	104605831	104605841	104605851	104605861	104605871
		5HM15S22M	5HM17S22M							
ELP 3-, 230-400V 50Hz ->		104605881	104605901							
		5HM06S11T	5HM07S11T	5HM08S11T	5HM09S15T	5HM10S15T	5HM11S15T	5HM12S22T	5HM13S22T	5HM14S22T
		104604591	104604601	104604611	104604621	104604631	104604641	104604651	104604661	104604671
		5HM15S22T	5HM17S30T	5HM19S30T	5HM21S30T					
Stages number ->		104604681	104604701	104604721	104604741					
		6	7	8	9	10	11	12	13	14
kW (M) ->		15	17	19	21					
		0.75	0.95	1.1	1.5	2.2				
kW (T) ->		2,2								
			1,1		1,5			2,2		
		2,2	3,0							

Pump Kit

*2	Mech D14 + ORings ->	VBE	KL01AFF	Std -> Seal VBE - OR EPDM upto 13 stages Std -> Seal QBE - OR EPDM since 14 stages
		QBE	KL01AFG	
		QQE	KL01AFH	
		VBV	KL01AFK	
		QBV	KL01AFL	
		QQV	KL01AFM	
		QBK	KL01AFU	
		QQK	KL01AFV	
*2b	OR EPDM (like item 2, less mech)	KL02ACE		
	OR FPM (like item 2, less mech)	KL02ACH		
	OR FFKM (like item 2, less mech)	KL02ACM		
8	Plugs S.S. EPDM + imp. screw	KL34AA0		
	Plugs S.S. FPM + imp. screw	KL34AA3		
	Plugs S.S. FFKM + imp. screw	KL34AA5		

Pump Kit and Single Unit

3	Sleeve with pipe	156504210	156504230	156504250	156504270	156504290	156504310	156504330	156504350	156504370
13	Pump tie rods	156504390	156504430	156504470	156504510					
		KL40AAH	KL40AAL	KL40AAN	KL40AAQ	KL40AAS	KL40AAU	KL40AAW	KL40AAZ	KL40AA0
*1	Impeller A304	150703620								
5	Diffuser	152803120								
		4	4	5	6	7	8	9	10	11
		12	13	15	17					
6	First stage diffuser	152802920								
7	Last stage diffuser w/wear ring	152803520								
9	Seal housing disc with wing	150104130								
10	Impeller spacers (n. 6/set)	KL07AAH								
		2	3	4	5					
	kit ->	5	6	7						
11	Head	151404110								
12	Ring with foot	161431570								
14	Diffuser with bearing	152803220								
16	Shaft rotor complete pumpshaft M	KL09AFY	KL09AFZ	KL09AF0	KL09AF1	KL09AF2	KL09AF3	KL09AF4	KL09AF5	KL09AF6
		KL09AF7	KL09AF8							
	Shaft rotor complete pumpshaft T	KL09AF9	KL09AGA	KL09AGB	KL09AGC	KL09AGD	KL09AGE	KL09AGF	KL09AGG	KL09AGH
		KL09AGK	KL09AGL	KL09AGM	KL09AGN					

Motor kit

		0.75		0.95		1.1		1.5		2.2		3.0	
4	Adaptor w/screws	1~	KL21AAR	KL21AAR	KL21AAS	KL21AAS	KL21AAS	KL21AAS	KL21AAS	5KL21AAG			
		3~	KL21AAS	-	KL21AAS	KL21AAS	KL21AAS	KL21AAS	KL21AAS	KL21AAS	5KL21AAG	5KL21AAG	
15	Motor casing + Stator	1~	KL25AAE	KL25AAG	KL25AAL	KL25AAN	KL25AABQ						
		3~	KL25ADD	-	KL25ADF	KL25ADH	5KL25AAB	5KL25ABP					
17	Bearings - Rings	1~	KL11AAB	KL11AAB	KL11AAU	KL11AAU	KL11AAU						
		3~	KL11AAU	-	KL11AAU	KL11AAU	KL11AAU	5KL11AAY	5KL11AAY				
18	Oil seals - Plugs	1~ / 3~	KL03ABP	KL03ABP	KL03ABP	KL03ABP	KL03ABP	KL03ABP	KL03ABP	5KL03AAA	5KL03AAA		
19	Terminal box	1~	KL30AAA	KL30AAB	KL30AAB	KL30AAB	KL30AAB	KL30AAB	KL30AAB	5KL30AC2			
		3~	KL30AAA	-	KL30AAA	KL30AAA	KL30AAA	KL30AAA	KL30AAA	5KL30AAE	5KL30AAE		
23	Fan cover w/screws	1~	KL29AAD	KL29AAD	KL29AAE	KL29AAE	KL29AAE	KL29AAE	KL29AAE	5KL29AAA	5KL29AAA		
		3~	KL29AAE	-	KL29AAE	KL29AAE	KL29AAE	KL29AAE	KL29AAE	5KL29AAA	5KL29AAA		
24	Motor foot/feet	1~	KL23AAE	KL23AAE	KL23AAD	KL23AAD	KL23AAD	KL23AAD	KL23AAD	5KL23AAA	5KL23AAA		
		3~	KL23AAD	KL23AAD	KL23AAD	KL23AAD	KL23AAD	KL23AAD	KL23AAD	5KL23AAA	5KL23AAA		
25	Motor Tie rods PLM90	1~ / 3~								5KL22AAA	5KL22AAA		
26	Rear shield NDE	1~ / 3~								5KL20AA7	5KL20AA7		

Motor Single Unit

20	Terminal block 1~	1~	158160680	158160700	158160500	158160510	5KL30AC4	
	Terminal block 3~	3~	158160280	-	158160280	158160280	5830AAA	5830AAA
21	Capacitor 1 -	1~	150990440	150990450	150990460	150990480	150990621	
		uF ->	20	25	30	40	30+40	
22	Fan SM63 -> 80 PLM90	1~	140760150	140760150	140760160	140760160	540760010	540760010
		3~	140760160	-	140760160	140760160	540760010	540760010

* Recommended spare parts - Parti di ricambio consigliate

* Pièces détachées conseillées - Empfohlene Ersatzteile

10HM..S "Sleeve Design"

ELP 2 P		10HM02S11M	10HM03S11M	10HM04S15M	10HM05S22M	10HM06S22M				
ELP 1-, 220-240V 50Hz ->		104606001	104606011	104606021	104606031	104606041				
ELP 3-, 400V 50Hz ->		10HM02S07T	10HM03S11T	10HM04S15T	10HM05S22T	10HM06S22T	10HM07S30T	10HM08S30T	10HM09S40T	10HM10S40T
- 230-400/50: upto 3kW		104604801	104604811	104604821	104604831	104604841	104604851	104604861	104604871	104604881
- 400-690/50: since 4 kW		10HM11S40T	10HM12S55T	10HM13S55T						
Stages number ->		104604891	104604901	104604911						
		2	3	4	5	6	7	8	9	10
		11	12	13						
kW (M) ->		1.1		1.5		2.2				
kW (T) ->		0.75	1.1	1.5		2.2		3.0		4.0
		4.0	5.5							

Pump Kit

*2	Mech D17 + ORings ->	VBE	KL01AFN	Std -> Seal VBE - OR EPDM upto 8 stages
		QBE	KL01AFP	Std -> Seal QBE - OR EPDM since 9 stages
		QOE	KL01AFQ	
		VBV	KL01AFR	
		QBV	KL01AFS	
		QQV	KL01AFT	
		QBK	KL01AFY	
		QKQ	KL01AFZ	10-22HM Sleeve Design
*2b	OR EPDM (like item 2, less mech) OR FPM (like item 2, less mech) OR FFKM (like item 2, less mech)	KL02ACF		
		KL02ACK		
		KL02ACN		
8	Plugs S.S. EPDM + imp. screw Plugs S.S. FPM + imp. screw Plugs S.S. FFKM + imp. screw	KL34AA1		
		KL34AA4		
		KL34AA6		

Pump Kit and Single Unit

3	Sleeve with pipe	156504600	156504600	156504610	156504620	156504630	156504640	156504650	156504660	156504670
		156504680	156504690	156504700						
13	Pump tie rods	KL40AAB	KL40AAB	KL40AAC	KL40AAD	KL40AAF	KL40ABA	KL40ABB	KL40ABD	KL40ABE
		KL40ABF	KL40ABG	KL40ABH						
*1	Impeller A304	150703630								
5	Diffuser	152803130								
		1	1	2	3	3	4	5	6	7
		8	9	10						
6	First stage diffuser	152802930								
7	Last stage diffuser w/wear ring	152803530								
9	Seal housing disc with wing	150104140								
10	Impeller spacers (n. 9/set)	KL07AAK								
	kit ->		1				2			
	->		3							
11	Head	151404130								
12	Ring with foot	161431600	161431600	161431600	161431600	161431600	161431600	161431600	161431610	161431610
		161431610	161431620	161431620						
14	Diffuser with bearing	152803230								
16	Shaft rotor complete pumpshaft M	KL09AHP	KL09AHP	KL09AHQ	KL09AHR	KL09AHS				
	Shaft rotor complete pumpshaft T	KL09AHT	KL09AHU	KL09AHV	KL09AHW	KL09AHX	KL09AHY	KL09AHZ	KL09AH0	KL09AH1
		KL09AH2	KL09AH3	KL09AH4						

Motor kit

	kW ->	0.75	1.1	1.5	2.2	3.0	4.0	5.5	
4	Adaptor w/screws	1-	KL21AAQ	KL21AAQ	5KL21AAF				
		3-	KL21AAQ	KL21AAQ	5KL21AAF	5KL21AAF	KL21AAT	KL21AAT	
15	Motor casing + Stator	1-	KL25ADD	KL25AAD	5KL25ABQ	5KL25ABP	5KL25AAP	5KL25ABR	
		3-	KL25ADD	KL25ADF	5KL25ADH	5KL25AAB	5KL25AAB	5KL25AAB	
17	Bearings - Rings	1-		KL11AAU	KL11AAU	5KL11AAY			
				6204/6204HE					
	Bearings - Rings	3-	KL11AAU	KL11AAU	KL11AAU	5KL11AAY	5KL11AAY	5KL11AAZ	5KL11AA0
				6204/6204HE		6204/6305HE	6205/6306HE	6206/6306HE	
18	Oil seals - Plugs	1- / 3-	KL03ABP	KL03ABP	KL03ABP	5KL03AAA	5KL03AAA	5KL03AAB	5KL03AAB
19	Terminal box	1-		KL30AAB	KL30AAB	5KL30AC2			
		3-	KL30AAA	KL30AAA	KL30AAA	5KL30AAE	5KL30AAE	5KL30AAG	5KL30AAL
23	Fan cover w/screws	1-		KL29AAE	KL29AAE	5KL29AAA	5KL29AAA	5KL29AAA	5KL29AAD
		3-	KL29AAE	KL29AAE	KL29AAE	5KL29AAA	5KL29AAA	5KL29AAB	5KL29AAD
24	Motor foot/feet	1-		KL23AAD	KL23AAD	5KL23AAA			
		3-	KL23AAD	KL23AAD	KL23AAD	5KL23AAA	5KL23AAA	5KL23AAB	5KL23AAC
25	Motor Tie rods PLM90	1- / 3-				5KL22AAA	5KL22AAA		
	Motor Screws since PLM100	1-						5KL40AAA	5KL40AAA
26	Rear shield NDE	1- / 3-				5KL20AA7	5KL20AA7	5KL20AA0	5KL20AA1
27	Front shield DE	1- / 3-						5KL20AAL	5KL20AAU

Motor Single Unit

20	Terminal block	1-		158160500	158160510	5KL30AC4		
	Terminal block	3-	158160280	158160280	158160280	5830AAA	5830AAA	5830AAB
21	Capacitor	1-		150990460	150990480	150990621		
						150990631		
	uF ->			30	40	30+40		
22	Fan SM63 -> 80 PLM90->112	1-		140760160	140760160	540760010		
		3-	140760160	140760160	140760160	540760010	540760010	540760030

* Recommended spare parts - Parti di ricambio consigliate

* Pièces détachées conseillées - Empfohlene Ersatzteile

1-22HM(S)-Sleeve_5_Sep13_EdF

15HM..S "Sleeve Design"

ELP 2 P						
ELP 1~, 220-240V 50Hz ->	15HM02S15M	15HM03S22M				
	104606171	104606181				
ELP 3~, 400V 50Hz ->	15HM02S15T	15HM03S22T	15HM04S30T	15HM05S40T	15HM06S55T	15HM07S55T
	104604971	104604981	104604991	104605001	104605011	104605021
Stages number ->	2	3	4	5	6	7
kW (M) ->	1.5	2.2				
kW (T) ->	1.5	2.2	3.0	4.0	5.5	5.5

ELP 3~, 400V 50Hz : 230-400/50 upto 3kW ; 400-690/50 since 4 kW

Pump Kit

*2	Mech D17 + ORings ->	VBE	KL01AFN	Std -> Seal VBE - OR EPDM upto 8 stages
		QBE	KL01AFP	Std -> Seal QBE - OR EPDM since 9 stages
		QQE	KL01AFQ	
		VBV	KL01AFR	
		QBV	KL01AFS	
		QQV	KL01AFT	
		QBK	KL01AFY	
		QVK	KL01AFZ	10-22HM Sleeve Design
*2b	OR EPDM (like item 2, less mech)	KL02ACF		
	OR FPM (like item 2, less mech)	KL02ACK		
	OR FFKM (like item 2, less mech)	KL02ACN		
8	Plugs S.S. EPDM + imp. screw	KL34AA1		
	Plugs S.S. FPM + imp. screw	KL34AA4		
	Plugs S.S. FFKM + imp. screw	KL34AA6		

Pump Kit and Single Unit

3	Sleeve with pipe	156504750	156504750	156504760	156504770	156504780	156504790
13	Pump tie rods	KL40AAC	KL40AAC	KL40AAE	KL40ABA	KL40ABC	KL40ABE
*1	Impeller A304	150703640					
5	Diffuser	152803150					
		1	1	2	2	3	4
6	First stage diffuser	152802950					
7	Last stage diffuser w/wear ring	152803540					
9	Seal housing disc with wing	150104140					
10	Impeller spacers (n. 9/set)	KL07AAL					
	kit ->		1				2
11	Head	151404140					
12	Ring with foot	161431600	161431600	161431600	161431610	161431620	161431620
14	Diffuser with bearing	152803230					

16	Shaft rotor complete pumpshaft M	KL09	KL09AH5				
	Shaft rotor complete pumpshaft T	KL09	KL09AH6	KL09AH7	KL09AH8	KL09AH9	KL09AKA

Motor kit		kW ->					
		1.5	2.2	3.0	4.0	5.5	
4	Adaptor w/screws	1~	KL21AAQ	5KL21AAF			
		3~	KL21AAQ	5KL21AAF	5KL21AAF	KL21AAT	KL21AAT
15	Motor casing + Stator	1~	KL25AAN	5KL25ABQ			
		3~	KL25ADH	5KL25AAB	5KL25ABP	5KL25AAP	5KL25ABR
17	Bearings - Rings	1~	KL11AAU	5KL11AAY			
	Bearings - Rings	3~	KL11AAU	5KL11AAY	5KL11AAY	5KL11AAZ	5KL11AA0
			6204/6204HE	6204/6305HE		6205/6306HE	6206/6306HE
18	Oil seals - Plugs	1~ / 3~	KL03ABP	5KL03AAA	5KL03AAA	5KL03AAB	5KL03AAB
19	Terminal box	1~	KL30AAB	5KL30AC2			
		3~	KL30AAA	5KL30AAE	5KL30AAE	5KL30AAG	5KL30AAL
23	Fan cover w/screws	1~	KL29AAE	5KL29AAA			
		3~	KL29AAE	5KL29AAA	5KL29AAA	5KL29AAB	5KL29AAD
24	Motor foot/feet	1~	KL23AAD	5KL23AAA			
		3~	KL23AAD	5KL23AAA	5KL23AAA	5KL23AAB	5KL23AAC
25	Motor Tie rods PLM90	1~ / 3~		5KL22AAA	5KL22AAA		
	Motor Screws since PLM100	1~				5KL40AAA	5KL40AAA
26	Rear shield NDE	1~ / 3~		5KL20AA7	5KL20AA7	5KL20AA0	5KL20AA1
27	Front shield DE	1~ / 3~				5KL20AAL	5KL20AAU

Motor Single Unit

20	Terminal block	1~	158160510	5KL30AC4			
	Terminal block	3~	158160280	5830AAA	5830AAA	5830AAB	
21	Capacitor	1~	150990480	150990621			
				150990631			
		uF ->	40	30+40			
22	Fan SM63 -> 80 PLM90->112	1~	140760160	540760010			
		3~	140760160	540760010	540760010	540760030	540760030

* Recommended spare parts - Parti di ricambio consigliate

* Pièces détachées conseillées - Empfohlene Ersatzteile

1-22HM(S)-Sleeve_5_Sept13_EdF

22HM..S "Sleeve Design"

ELP 2 P				
ELP 1~, 220-240V 50Hz ->	22HM02S22M			
	104606281			
ELP 3~, 400V 50Hz ->	22HM02S22T	22HM03S30T	22HM04S40T	22HM05S55T
	104605081	104605091	104605101	104605111
Stages number ->	2	3	4	5
kW (M) ->	2.2			
kW (T) ->	2.2	3.0	4.0	5.5

ELP 3~, 400V 50Hz : 230-400/50 upto 3kW ; 400-690/50 since 4 kW

Pump Kit

*2	Mech D17 + ORings ->	VBE	KL01AFN	Std -> Seal VBE - OR EPDM
		QBE	KL01AFP	
		QQE	KL01AFQ	
		VBV	KL01AFR	
		QBV	KL01AFS	
		QQV	KL01AFT	
		QBK	KL01AFY	
		QQK	KL01AFZ	
*2b	OR EPDM (like item 2, less mech) OR FPM (like item 2, less mech) OR FFKM (like item 2, less mech)	KL02ACF		10-22HM Sleeve Design
		KL02ACK		
		KL02ACN		
		KL34AA1		
8	Plugs S.S. EPDM + imp. screw Plugs S.S. FPM + imp. screw Plugs S.S. FFKM + imp. screw	KL34AA4		
		KL34AA6		

Pump Kit and Single Unit

3	Sleeve with pipe	156504750	156504750	156504760	156504770
13	Pump tie rods	KL40AAC	KL40AAC	KL40AAE	KL40ABA
*1	Impeller A304	150703650			
5	Diffuser	152803150			
		1	1	2	2
6	First stage diffuser	152802950			
7	Last stage diffuser w/wear ring	152803540			
9	Seal housing disc with wing	150104140			
10	Impeller spacers (n. 9/set)	KL07AAL			
	kit ->		1		
11	Head	151404140			
12	Ring with foot	161431600	161431600	161431610	161431620
14	Diffuser with bearing				152803250
16	Shaft rotor complete pumpshaft M	KL09AH5			
	Shaft rotor complete pumpshaft T	KL09AH6	KL09AKB	KL09AKC	KL09AKD

Motor kit

		kW ->		2.2	3.0	4.0	5.5
4	Adaptor w/screws	1~	5KL21AAF				
		3~	5KL21AAF	5KL21AAF	KL21AAT	KL21AAT	
15	Motor casing + Stator	1~	5KL25ABQ				
		3~	5KL25AAB	5KL25ABP	5KL25AAP	5KL25ABR	
17	Bearings - Rings	1~	5KL11AAY				
			6204/6305HE				
	Bearings - Rings	3~	5KL11AAY	5KL11AAY	5KL11AAZ	5KL11AA0	
			6204/6305HE		6205/6306HE	6206/6306HE	
18	Oil seals - Plugs	1~ / 3~	5KL03AAA	5KL03AAA	5KL03AAB	5KL03AAB	
19	Terminal box	1~	5KL30AC2				
		3~	5KL30AAE	5KL30AAE	5KL30AAG	5KL30AAL	
23	Fan cover w/screws	1~	5KL29AAA				
		3~	5KL29AAA	5KL29AAA	5KL29AAB	5KL29AAD	
24	Motor foot/feet	1~	5KL23AAA				
		3~	5KL23AAA	5KL23AAA	5KL23AAB	5KL23AAC	
25	Motor Tie rods PLM90	1~ / 3~	5KL22AAA	5KL22AAA			
	Motor Screws since PLM100	1~			5KL40AAA	5KL40AAA	
26	Rear shield NDE	1~ / 3~	5KL20AA7	5KL20AA7	5KL20AA0	5KL20AA1	
27	Front shield DE	1~ / 3~			5KL20AAL	5KL20AAU	

Motor Single Unit

20	Terminal block	1~	5KL30AC4				
	Terminal block	3~	5830AAA	5830AAA	5830AAA	5830AAB	
21	Capacitor	1~	150990621				
			150990631				
		uF ->	30+40				
22	Fan SM63 -> 80 PLM90->112	1~	540760010				
		3~	540760010	540760010	540760030	540760030	

* Recommended spare parts - Parti di ricambio consigliate
* Pièces détachées conseillées - Empfohlene Ersatzteile

xylem